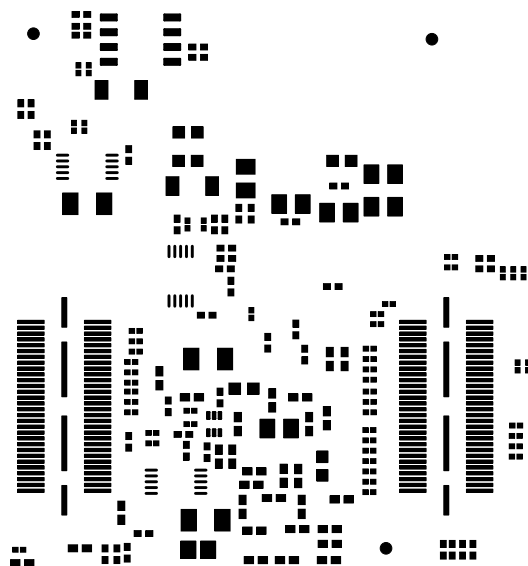


ALL ARTWORK VIEWED FROM TOP SIDE	BOARD #: PROC073	REV: B	SVN REV: Not In VersionControl
LAYER NAME = Top Paste	TID #: N/A		
PLOT NAME = PROC073B.GTP	GENERATED : 11/28/2018 10:01:05 AM		TEXAS INSTRUMENTS



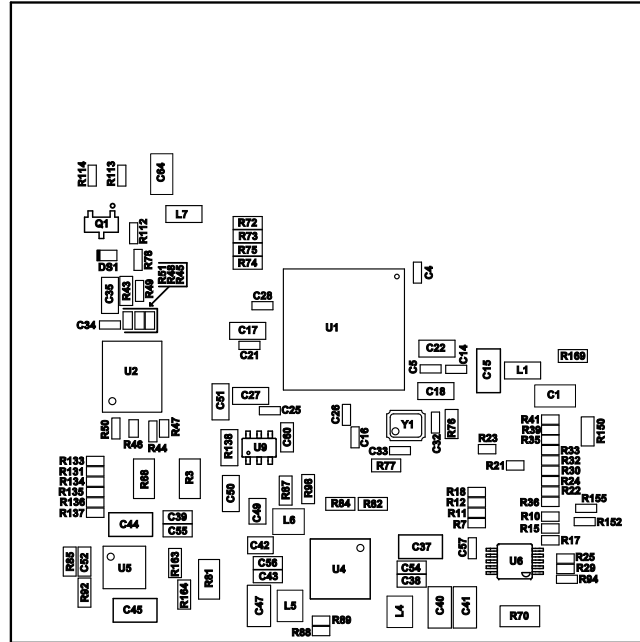
ALL ARTWORK VIEWED FROM TOP SIDE	BOARD #: PROC073	REV: B	SVN REV: Not In VersionControl
LAYER NAME = Bottom Paste	TID #: N/A		
PLOT NAME = PROC073B.GBP	GENERATED : 11/28/2018 10:01:05 AM		TEXAS INSTRUMENTS

Z21 ■ Install label in silkscreened box after final wash. Text shall be 8 pt font. Text shall be per the Label Table in the PDF schematic.

Z22 ■ These assemblies are ESD sensitive, ESD precautions shall be observed.

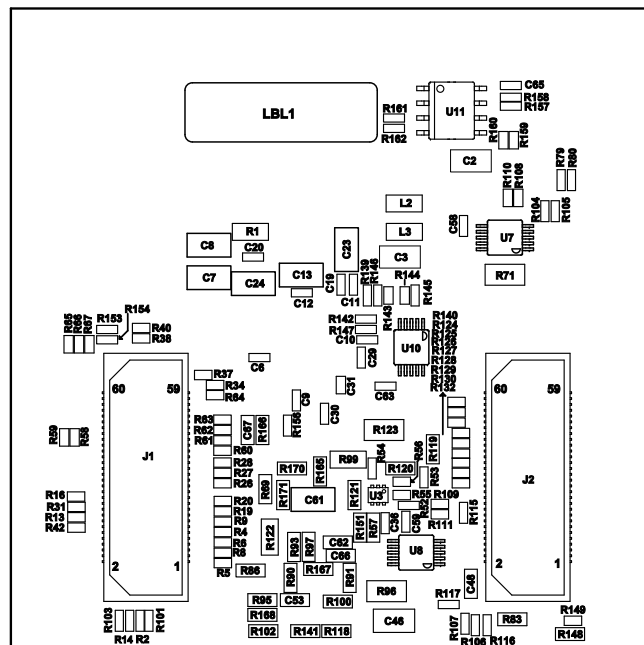
Z23 ■ These assemblies must be clean and free from flux and all contaminants. Use of no clean flux is not acceptable.

Z24 ■ These assemblies must comply with workmanship standards IPC-A-610 Class 2, unless otherwise specified.



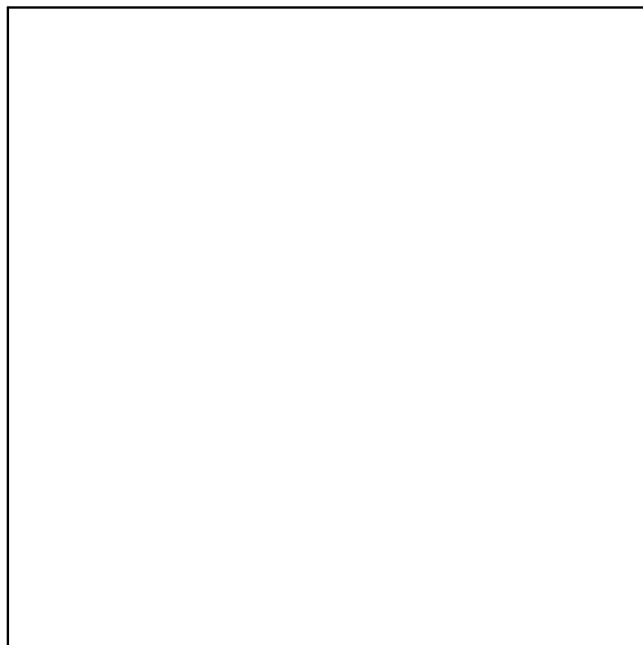
COMPONENTS MARKED 'DNP' SHOULD NOT BE POPULATED.  
ASSEMBLY VARIANT: [No Variations]

PCB VIEWED FROM TOP SIDE	BOARD #: PROC073	REV: B	SUN REV: Not In VersionControl
Assembly Layer Top	TID #: N/A		
PLOT NAME = PROC073B.GM5	GENERATED : 11/28/2018 10:13:20 AM		TEXAS INSTRUMENTS



COMPONENTS MARKED 'DNP' SHOULD NOT BE POPULATED.  
 ASSEMBLY VARIANT: [No Variations]

PCB VIEWED FROM BOTTOM SIDE	BOARD #: PROC073	REV: B	SUN REV: Not In VersionControl
Assembly Bottom Layer	TID #: N/A		
PLOT NAME = PROC073B.GM6	GENERATED : 11/28/2018 10:13:20 AM		TEXAS INSTRUMENTS



ALL ARTWORK VIEWED FROM TOP SIDE	BOARD #: PROC073	REV: B	SVN REV: Not In VersionControl
LAYER NAME = M1 Board Outline	TID #: N/A		
PLOT NAME = PROC073B.GM1	GENERATED : 11/28/2018 10:01:06 AM		TEXAS INSTRUMENTS